



JM *Technical Textiles*

SCREEN
DIMOUT
BLACKOUT
ALUMINIUM
ACOUSTIC
MEDI CARE
FACADE

2%

Tecno Screen

Tecno Screen 2%



80113   Basalt



70045  Stone



80132   Graphite



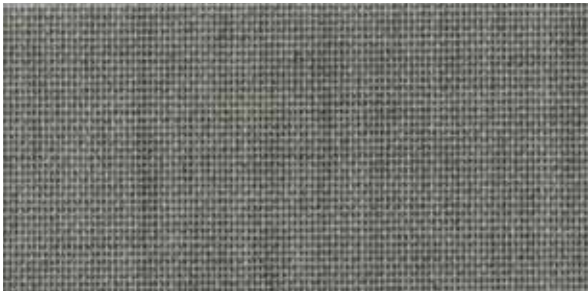
70044  Chestnut



80176  Concrete



20153  Sand



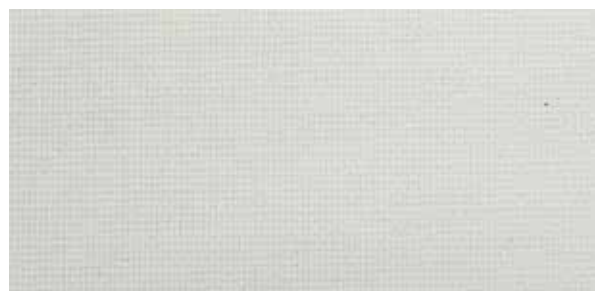
80175  Cement



20152  Linen



20088   Fawn



13041   Pure White

Tecno Screen 2%



PVC-, halogen- and antimony-free finish



textile appearance



very good acoustic properties



extra wide fabric width



cold cut



excellent dimensional stability

colour	optical factors										thermal factors					
	fabric						classification				fabric				fabric + glazing	
	visible light (%)						glare control	night privacy	visual contact	daylight utilisation	solar radiation (%)				glazing D _{g=0,32 U_g=1,1}	
T _v	R _v	A _v	T _{v,n-n}	T _{v,n-dif}	R _a	T _s					R _s	A _s	T _{UV}	g _{tot}	class	
13041	33	66	1	2,2	31,6	97	0	2	0	3	33	60	7	10	0,17	2
20088	25	37	38	1,7	23,0	91	0	2	0	2	26	38	36	16	0,23	2
20152	36	48	16	1,8	34,3	95	0	2	0	3	36	47	17	26	0,21	2
20153	28	38	34	2,7	24,8	88	0	2	0	2	29	39	32	18	0,23	2
70044	16	27	57	2,4	14,0	82	1	2	1	2	19	30	51	11	0,25	2
70045	11	19	70	2,0	9,0	91	2	2	1	2	13	21	66	8	0,26	2
80113	4	7	89	1,8	1,7	99	3	2	2	1	4	9	87	3	0,28	2
80132	9	18	73	1,9	7,4	98	2	2	1	1	11	19	70	7	0,26	2
80175	25	36	39	1,9	22,9	95	0	2	0	2	26	37	37	18	0,23	2
80176	22	32	46	2,1	19,9	97	1	2	0	2	23	33	44	16	0,24	2

Data is measured according to EN 410:2011 and EN 14500:2021. Calculations of g_{tot} are defined according to EN ISO 52022-3:2017 using solar control double glazing type D (g=0,32; U_g=1,1). Other glazing types can be calculated on request.

Classifications: 0 (very little effect), 1 (little effect), 2 (moderate effect), 3 (good effect) and 4 (very good effect) refer to EN 14501:2025.



available in 310 cm / 122"







available in 410 cm / 161"



available as vertical blind in 89 mm / 3,5" and 127 mm / 5"



Article		04-2038-3100 	04-2038-4100 	07-2038-89 	07-2038-127 
Width		310 cm / 122"	410 cm / 161"	89 mm / 3,5"	127 mm / 5"
Base material		100 % polyester	100 % polyester	100 % polyester	100 % polyester
Weight approx.	EN 12127	255 g/m ² / 7,5 oz/yd ²	255 g/m ² / 7,5 oz/yd ²	255 g/m ² / 7,5 oz/yd ²	255 g/m ² / 7,5 oz/yd ²
Thickness approx.	EN ISO 5084	0,58 mm / 0,023"	0,58 mm / 0,023"	0,58 mm / 0,023"	0,58 mm / 0,023"
Openness factor OF	EN 14500	2 %	2 %	2 %	2 %
Flame retardancy		B-s1,d0 / NFPA 701 / C1 / California U.S. Title 19			
Sound absorption	EN ISO 10534-2	$\alpha_w = 0,45$	$\alpha_w = 0,45$	$\alpha_w = 0,45$	$\alpha_w = 0,45$
Light fastness (window side)	EN ISO 105-B02	min. 6-7	min. 6-7	min. 6-7	min. 6-7
Tensile properties: Determination of max. force Elongation at max. force	EN ISO 13934-1	warp: > 110 daN - weft: > 120 daN warp: approx. 20 % - weft: approx. 23 %			
Suitable for moist atmosphere		no	no	no	no
Manufacturing guidance		to cut with cold knife		to manufacture with welding agent, welding parameters must be tested in advance	
Roll length approx.		32 m / 35 yd	32 m / 35 yd	150 m / 164 yd	150 m / 164 yd
Care instruction		brush off, vacuum cleaning		brush off, vacuum cleaning	

The information provided in this document do not exempt processors from carrying out own tests and trials as further handling and processing may show significant effects on our products. Application, utilization and processing of products are beyond our control and are therefore the sole responsibility of the processors.

All specifications are based on current knowledge and experience. They are based on average values and may deviate within the standard tolerance limits. Subject to technical modifications.

* flame retardancy not guaranteed after washing

Product certificates and guarantees



REACH
compliant



Sustainable building certificates

All JM fabrics certified according to SCS Advantage™ Gold can contribute to credits in sustainable building certifications, such as DGNB, BREEAM and LEED.