



JM *Technical Textiles*

SCREEN
DIMOUT
BLACKOUT
ALUMINIUM
ACOUSTIC
MEDI CARE
FACADE

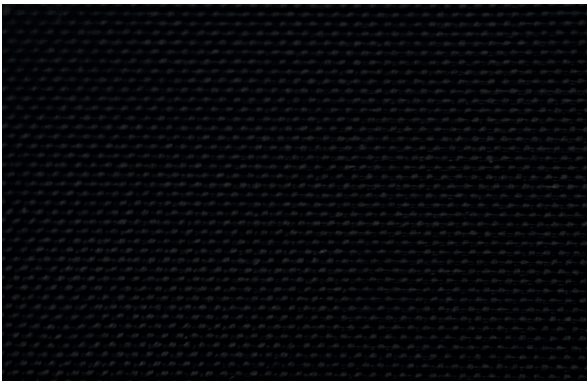
3%

Cosmo Screen Upcycling

Cosmo Screen Upcycling

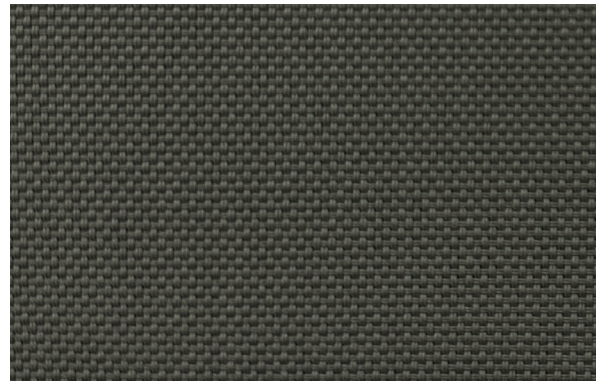
3%

04-2229-3100 310 cm | 122"



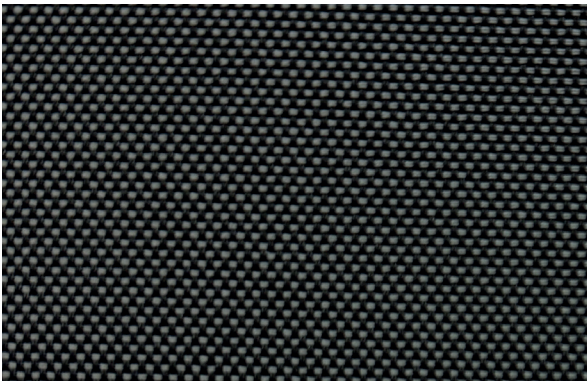
90032

Raven



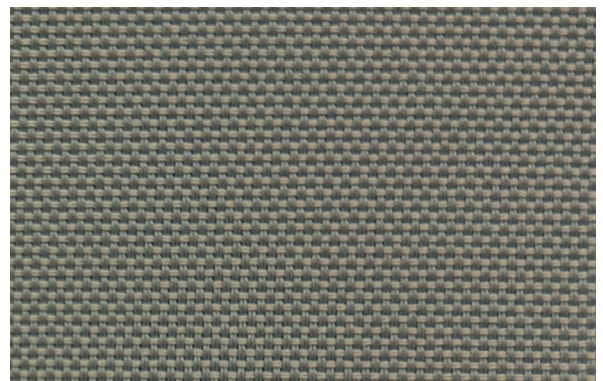
70056

Driftwood



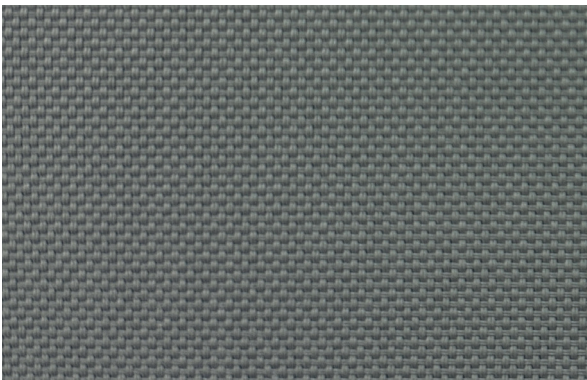
80177

Graphite



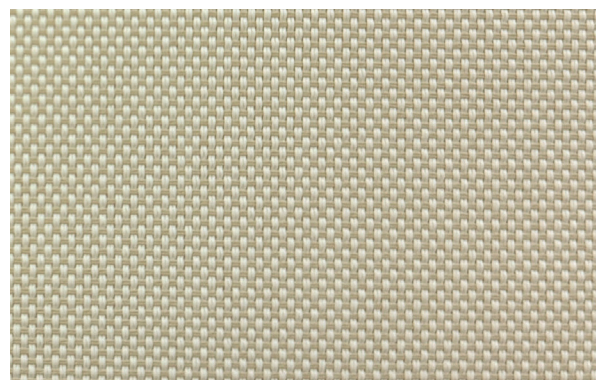
20179

Sandstone



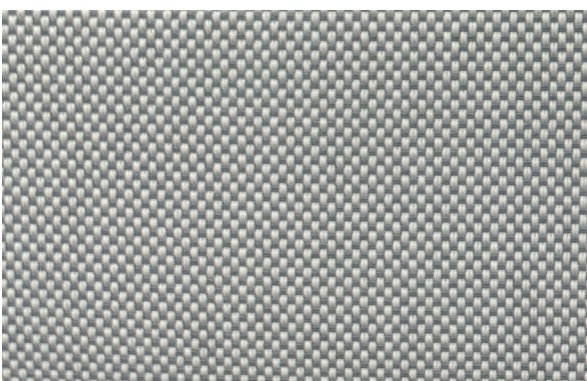
80188

Iron



20178

Sandy Whisper



80162

Cloud



13059

Frost

Cosmo Screen Upcycling 3%



PVC-, halogen- and antimony-free finish



durable in handling and processing



very good glare control in dark colours



cold cut



good visual contact in dark colours



excellent dimensional stability



very good acoustic properties

colour	optical factors										thermal factors					
	fabric						classification				fabric				fabric + glazing	
	visible light (%)					R _a	glare control	night privacy	visual contact	daylight utilisation	solar radiation (%)				glazing D <small>g=0,32 Ug=1,1</small>	
	T _v	R _v	A _v	T _{v,n-n}	T _{v,n-dif}						T _s	R _s	A _s	T _{UV}	g _{tot}	class
13059	20	80	0	2,4	17,1	94	1	2	0	2	21	73	6	4	0,14	3
20178	14	64	22	3,3	10,4	86	1	2	1	2	17	61	22	4	0,17	2
20179	6	33	61	3,2	3,2	91	3	2	2	1	8	34	58	4	0,24	2
70056	2	16	82	1,1	0,8	92	4	2	2	1	2	18	80	2	0,27	2
80162	10	56	34	2,2	8,1	94	2	2	1	1	12	53	35	3	0,19	2
80177	4	10	86	3,1	0,5	99	3	2	2	1	4	11	85	4	0,28	2
80188	5	27	68	3,1	2,4	97	3	2	2	1	7	29	64	4	0,25	2
90032	3	4	93	3,0	0,2	99	3	2	2	1	3	4	93	3	0,29	2

Data is measured according to EN 410:2011 and EN 14500:2021. Calculations of g_{tot} are defined according to the detailed method EN ISO 52022-3:2017 using solar control double glazing type D (g=0,32; U_g=1,1). Other glazing types can be calculated on request.


Classifications: 0 (very little effect), 1 (little effect), 2 (moderate effect), 3 (good effect) and 4 (very good effect) refer to EN 14501:2025.



- ✓ min. 80 % recycled post-consumer polyester (PET - plastic waste)
- ✓ sustainable
- ✓ saves fossil resources

Cosmo Screen Upcycling 3%



Article		04-2229-3100 
Width		310 cm / 122"
Base material		min. 80 % recycled polyester
Weight approx.	EN 12127	340 g/m ² / 10,0 oz/yd ²
Thickness approx.	EN ISO 5084	0,63 mm / 0,025"
Openness factor OF	EN 14500	3 %
Flame retardancy		B-s1,d0
Sound absorption	EN ISO 10534-2	$\alpha_w = 0,45$
Light fastness (window side)	EN ISO 105-B02	min. 6
Tensile properties: Determination of max. force Elongation at max. force	EN ISO 13934-1	warp: > 250 daN - weft: > 220 daN warp: approx. 45 % - weft: approx. 35 %
Suitable for moist atmosphere		yes
Manufacturing guidance		to cut with cold knife
Roll length approx.		25 m / 27 yd
Care instruction		brush off, vacuum cleaning

The information provided in this document do not exempt processors from carrying out own tests and trials as further handling and processing may show significant effects on our products. Application, utilization and processing of products are beyond our control and are therefore the sole responsibility of the processors.

All specifications are based on current knowledge and experience. They are based on average values and may deviate within the standard tolerance limits. Subject to technical modifications.

The base material of this article is made of at least 80 % recycled PET bottles. Due to different colours of PET bottles and the corresponding final colour of the recycled polyester fibers, colour deviations cannot be completely avoided, despite the utmost care in selection and recycling.

Product certificates and guarantees



REACH
compliant

Sustainable building certificates

All JM fabrics certified according to SCS Advantage™ Gold can contribute to credits in sustainable building certifications, such as DGNB, BREEAM and LEED.

